



THE 2012 Lighthouse International Film Festival June 1st - 3rd Long Beach Island, New Jersey



Supported in part by a grant from New Jersey Department of State, Division of Travel and Tourism • visitnj.org



This program is made possible in part by a grant administered by the Ocean County Cultural and Heritage Commission, in conjunction with the New Jersey State Council on the Arts/Department of State, a partner agency of the National Endowments for the Arts.



FUNDED IN PART BY A GRANT FROM THE BOARD OF CHOSEN FREEHOLDERS
For Free Vacation Guide
CALL 800 - 365 - 6933
WWW.OCEANCOUNTYTOURISM.COM

A LETTER FROM THE DIRECTOR

It gives me great pleasure to welcome you to Long Beach Island for our fourth year of the Lighthouse International Film Festival! Throughout the year our programmers have traveled the world to put together a weekend celebration of the most important, ground-breaking and thought-provoking films, which this year hail from 17 countries. We're delighted to be able to report that the world film community has begun to take notice -- last year leading film festival publication indieWIRE included our event in its exclusive list of the top film festivals in the world in the month of June, an unexpected and wonderful honor. We are also grateful to see so many of our past filmmakers returning again this year, whether as part of the festival jury, volunteers, and of course as part of this year's film lineup -- your continued support and participation means the world to us.

As in past years, this weekend features award-winning films from the Sundance, Cannes, Toronto, Berlin, South-by-Southwest and Tribeca film festivals, as well as a host of fantastic new films

that have honored us with their world premieres. We are proud to have the full cinematic spectrum on display, from hard-hitting documentaries to hysterical comedies, heart-felt dramas to nerve-racking horror films. We are especially proud to welcome many of the filmmakers behind these films, who have flown in from all over the world to join us this weekend. The festival was founded precisely to support filmmakers like these.

It is our sincere hope that throughout the weekend, these films will generate needed discussions about many of the important issues facing our community and the world at large. We are particularly proud to continue our festival's commitment to showcasing important environmental films, including powerful documentaries "Chasing Ice" which features powerful time-lapse images that show the massive decline of the ice glaciers, and "Cape Spin" an up-close look at the political and cultural controversy erupted in reaction to a plan to create a massive wind farm off Nantucket.

We look forward to this weekend all year, and we can hardly believe it's already here, but you'll be happy to know the festival doesn't end on Sunday -- everyone is welcome to join us for our monthly Lighthouse Film Society, a year-round extension of the festival, featuring more incredible films from all walks of life world-wide. Please check our website for the exciting films we have in the works for the coming year, including next month's incredible "Red Light Revolution", and you can also join our mailing list to stay up to speed on the latest details.

On behalf of the hundreds of volunteers, sponsors and donors who have been working and helping year-round to make this festival possible, we thank you from the bottoms of our hearts for your generous support and we hope you enjoy the show!

CHARLIE PRINCE
FOUNDER & EXECUTIVE DIRECTOR

STAFF & SPECIAL THANKS

EXECUTIVE DIRECTOR

Charlie Prince

MANAGING DIRECTOR

Christine Rooney

DIRECTOR OF OPERATIONS

John Miller

DIRECTOR OF PROGRAMMING

Eric Johnson

SPONSORSHIP DIRECTOR

Charlotte Prince

TECHNICAL DIRECTOR

Karl Mehner

ADMINISTRATIVE DIRECTOR

Hope Gardner

STUDENT OUTREACH DIRECTOR

Michele Simoneau, Katie Prince

INTERACTIVE MEDIA DIRECTOR

Terry Yuen, Britney Harris

WEBSITE DIRECTOR

Mary DeMichele

ENTERTAINMENT INDUSTRY OUTREACH DIRECTOR

Susannah Gora

TRAVEL DIRECTOR

Ariene Muzacz

BOARD OF DIRECTORS

Damian Schaible, John Miller, Charlie Prince

PUBLIC RELATIONS & MARKETING

Arlene Schragger

LOGISTICS

Fred Schragger

TREASURER

Bernice Schoket

VOLUNTEER COORDINATOR

Vickie VanDoren

HOSPITALITY/HOUSING COORDINATOR

Maggie O'Neill

SPONSORSHIP COORDINATOR

Cheryl Kirby

FESTIVAL ORGANIZERS

Gal Gendler, Charlotte Prince, Juan Garcia, Maggie O'Neill, Cheryl Kirby, Lori Papanella, Rick Reynolds, Lauren Answorth, Zach Abella, Sondra Beninati, Damian Schaible, Cherie Schaible, Jill Greenwald, Eric Johnson, Clem Turner, Calvin Swaim, Siraj Huda, Christiaan Tahyar, Hope Gardner, Jor Law

SENIOR PROGRAMMERS

Tom Blake, Wade Bowen, Chip Parham, Christiaan Tahyar

PROGRAMMERS

Zach Abella, Steve Amshan, Sharon Bayuga-Miller, Steven Boske, Jill Greenwald, Nick Leszczynski, John Miller, Brian Morgenstern, Luu Pena, Jordan Wolff, Terry Yuen

SPECIAL EVENTS TEAM

Cheryl Kirby, Maggie O'Neill, Christine Rooney, Cherie Schaible, Damian Schaible, Steve & Sondra Beninati

FILM SOCIETY TEAM

Hope Gardner, Christine Rooney, Charlie Prince, Eric Johnson, Chris Seiz

ONLINE SUBMISSIONS / WITHOUTABOX

Yasmine Hanani

LOGO DESIGN

Robert Schuellein

FESTIVAL CAMPAIGN & ARTWORK DIRECTORS

Tammy Duncan, Mary DeMichele, Deanna DiStefano, Veronica Pisano, Matt Schoch

ARTWORK / POSTER / WEBSITE

OrangeYouGlad

SURFING FILM ADVISORS

Morgan Berk

NY SURF FILM FESTIVAL KIDS FILM ADVISORS

Ann Church

LEGAL ADVISORS

Damian Schaible, Cherie Schaible, Joshua Ruland, Joanna Mork

COMMERCIALS

LBI TV

RADIO

WBNJ 91.9 FM

VIDEOGRAPHER

David Kaltenbach

PHOTOGRAPHER

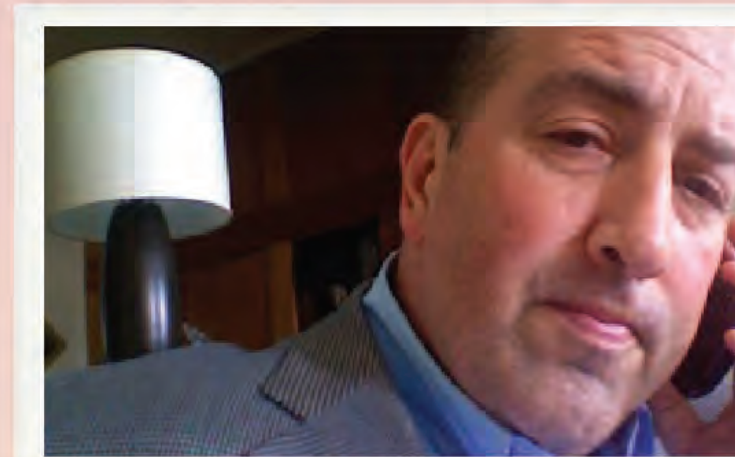
Halley Feaster - Rock Solid Productions, Sara Caruso

TECHNICAL COORDINATORS

Calvin Swaim, Tom Blake

BREAKFAST with the FILMMAKERS

MEET & EAT WITH GLENN KENNY!



GLENN KENNY

Start your festival day off right with renowned film critic Glenn Kenny moderating a special breakfast discussion with filmmakers in town from the Lighthouse International Film Festival. The event will take place at 9:00 AM on the mornings of Saturday June 2nd and Sunday June 3rd at The Gateway Restaurant located at 227 West 8th Street in Ship Bottom. Complimentary breakfast snacks will be provided by Little Bite of Italy.

Glenn Kenny was the senior editor and chief film critic for Premiere magazine from 1998 to 2007. He has written on film and music for The Village Voice, Entertainment Weekly, The New York Times, The New York Daily News, TV Guide, Rolling Stone, and other publications. He is the editor of the book *A Galaxy Not So Far Away: Writers and Artists on 25 Years of "Star Wars."* He currently contributes to MSN Movies, The Auteurs' Notebook, and the DGA Quarterly and maintains the blog *Some Came Running.*

NOTE: Due to space constraints, this event will be limited to festival passholders only. On a first come basis.

TICKET INFORMATION WWW.LIGHTHOUSEFILMFESTIVAL.ORG

Individual Tickets

\$10

FOR ALL FILMS, EXCEPT WHERE NOTED

AND WILL BE AVAILABLE ONLINE OR AT THE DOOR AT ALL SCREENINGS, PENDING AVAILABILITY

ALL ACCESS PASSES

\$125

MAY BE BOUGHT AT:

THE DOOR OF ALL SCREENINGS
CHAMBER OF COMMERCE
THINGS A-DRIFT
LBI FOUNDATION OF THE ARTS & SCIENCES
ON-LINE

SPECIAL EVENTS

OPENING NIGHT PARTY

FRIDAY, JUNE 1ST

Come join the fun at the LIFF 2012 Opening Night Party. Mingle with filmmakers, actors, sponsors and festival staff and volunteers over a drink at The Dutchman's Brauhaus. The party starts early and goes late, so come by on your way to a film or stop by after to tell everyone what you think and plan the rest of your festival.

NOTE: Event limited to Festival Passholders and Filmmakers only.

TIME: 9 p.m. - 1:00 a.m.

LOCATION: The Dutchman's Brauhaus

SATURDAY NIGHT PARTY

SATURDAY, JUNE 2ND

The LIFF Saturday Night Party remains one of the most popular festival events. Come out to Joe Pop's in the center of LBI, join the fun and mingle with filmmakers and festival staff alike.

NOTE: Event limited to Festival Passholders and Filmmakers only.

TIME 9:30 p.m.-1:00 a.m.

LOCATION Joe Pop's

CLOSING PARTY & AWARDS CEREMONY

SUNDAY, JUNE 3RD

You've seen the films, you've met the filmmakers, you've voted on your favorites, now come out to the Dutchman's Brauhaus and see who will take home LIFF top honors.

NOTE: Awards Ceremony will begin approximately 7:00 p.m.

TIME: 6:00 p.m.-8:00 p.m.

LOCATION: The Dutchman's Brauhaus



FOR ELLEN*

Paul Dano (*There Will Be Blood*, *Little Miss Sunshine*) delivers his finest performance yet as Joby, a struggling musician who sets off to meet his estranged daughter. Dano is perfect in a powerful, touching role as he tries to amend for his past and bring hope into both their futures. Jon Heder (*Napolean Dynamite*) brings nicely timed comic relief as Joby's attorney and the setting of beautiful, stark landscapes capture a tone that pulls the story together expertly. Director So Yong Kim tells a deeply personal story with a masterful touch.

RUNNING TIME 93 minutes; DIRECTOR So Yong Kim;
COUNTRY OF ORIGIN USA

OPENING NIGHT FILM

HEADLINERS



LITTLE BIRDS*

Little Birds emanates both a harsh reality and an innocent luster as it explores the vigorous desire to escape one's home—and the heavy price it can cost. Fifteen-year-old Lily (*Juno Temple*) and her best friend, Alison (*Kay Panabaker*), live on the shores of the Salton Sea. Sprinting toward adulthood, Lily wants to escape her depressing hometown. But Alison is content with her life; she enjoys being sheltered from the uncertainty of growing up. When the girls meet three street kids, Lily convinces Alison to follow the boys to Los Angeles. Thrust into a world of excitement and danger, the girls must decide how far they are willing to go to get what they want. Elgin James' breakout debut skillfully weaves the girls' tale in an honest, powerful and singular fashion all his own.

RUNTIME 96 minutes; DIRECTOR Elgin James;
COUNTRY OF ORIGIN USA

CENTERPIECE FILM



SLEEPWALK WITH ME

Comedian Mike Birbiglia hilariously delves into his own life in the story of his beginnings as a struggling unknown in denial about his life, career and sleeping disorder. Based on his hit one man off-Broadway play and book of the same name, Birbiglia shows off impeccable comic timing and self-deprecation in casting the camera lens inward, and is supported by terrific performances by Lauren Ambrose and Carol Kane. Poignant and very, very funny, the film, announces the emergence of a new voice in comedy filmmaking.

Director: Mike Birbiglia
RUNNING TIME 80 minutes;
COUNTRY OF ORIGIN USA

CLOSING NIGHT FILM

*FILMMAKER EXPECTED TO ATTEND

SPOTLIGHT FILMS

THE AMBASSADOR

If you're agent provocateur Mads Brügger (LIFF 2010 Opening Film *The Red Chapel*), how do you top a comedic, heartbreaking documentary where you risked life and limb to show the scale of North Korea's stranglehold on its people? Simple. You head to the Central African Republic, take on the persona of a 1970s baron and attempt to purchase an ambassadorship (and possibly some blood diamonds) in the most lawless place on earth. Hilarious, jaw-dropping and at times terrifying, Brügger again manages to spin an entertaining social commentary from a place most wouldn't dare visit. Brügger shows why he's considered one of the most intriguing documentary filmmakers working today.

RUNTIME 93m; DIRECTOR Mads Brügger; COUNTRY OF ORIGIN Denmark; English with occasional subtitled Danish and French

THE AMBASSADOR



CAPE SPIN



CAPE SPIN*

The proposed offshore windfarm near Nantucket, Cape Cod and Martha's Vineyard sparked a huge battle that spawned the most unlikely bedfellows on both sides of the issue. A crowd-pleasing, enlightening film that's both comic and tragic as it deftly relays the story of the impassioned battle, *CAPE SPIN* deals with a vital issue that LBI may soon itself face and it signals a new take on environmental documentaries.

RUNTIME 90m; DIRECTOR Robbie Gemmel; COUNTRY OF ORIGIN USA;

CHASING ICE

Photographer James Balog was once a skeptic about climate change. But through his Extreme Ice Survey, he discovers undeniable evidence of our changing planet. In *Chasing Ice*, Balog deploys revolutionary time-lapse cameras to capture a multi-year record of the world's changing glaciers. Traveling with a team across the brutal Arctic, Balog risks his career and his well-being in pursuit of the biggest story facing humanity. As the debate polarizes America, and the intensity of natural disasters ramps up globally, *Chasing Ice* depicts a heroic photojournalist on a mission to deliver fragile hope to our carbon-powered planet.

RUNTIME 76m; DIRECTOR Jeff Orlowski; COUNTRY OF ORIGIN USA

CHASING ICE



DAYLIGHT SAVINGS



DAYLIGHT SAVINGS

After a devastating breakup, musician Goh Nakamura hits the road with his irresponsible cousin to pursue a promising rebound with fellow musician Yea-Ming Chen. Director Dave Boyle delivers another sweet, funny and endearing road-trip romantic comedy in a style all his own.

RUNTIME 73m; DIRECTOR Dave Boyle; COUNTRY OF ORIGIN USA

EXTRACTED

Thomas Jacobs invents a way to watch people's memories from the inside. Going against his morals, he accepts an offer to enter a heroin addict's memories to literally see if he committed a crime. When a malfunction causes the unthinkable to happen, Thomas must devise a way out of his desperate situation. A mind-bending, twisting science fiction thriller that was a breakout success at this year's SXSW film festival, it cleverly nods to the genre while carving out a story and characters all its own.

RUNTIME 88m; DIRECTOR Nir Paniry; COUNTRY OF ORIGIN USA

EXTRACTED



NOW, FORAGER



NOW, FORAGER

A beautifully shot romantic drama about two foodies living off the grid and their struggle to hold things together when forced to return to a mainstream fold. Honest, fresh and mouth-watering, this breakout gem tells its story as its characters live their lives: on its own terms. Partially shot in New Jersey's pine barrens, it's a tale that will appeal to anyone who has ever been in love with food, another person, or both, and been left wanting more.

RUNTIME 93 minutes; DIRECTOR Jason Cortlund; Country of Origin USA

SAVE THE DATE*

LIFF alumni Michael Mohan (Ex Sex, LIFF 2011) returns with a film to define a generation. Lizzy Caplan (in the breakout performance of the 2012 Sundance Film Festival) is perfect as Sarah, a skittish artist as unsure of herself in love as she is certain about all else. Alison Brie (*Mad Men*, *Community*) is her sister, whose impending wedding signals a shift in her relationship with Sarah and how the two women view life. Avoiding cliché and presenting an honest look at how even the best relationships are often wildly complex, Mohan delivers a film full of life, delivering laughs, heartache and hope. Martin Starr, Geoffrey Arend, Mark Webber and Timothy Busfield round out the fantastic cast.

RUNTIME 98m; DIRECTOR Michael Mohan; COUNTRY OF ORIGIN USA

SAVE THE DATE



SPOTLIGHT FILMS CONT'D

TAKE THIS WALTZ



TAKE THIS WALTZ

Academy Award™ nominee Michelle Williams (*My Week With Marilyn*) is again fantastic as she plays a happily married woman who falls for the artist (Luke Kirby) who lives across the street. Never as simple as it seems, Sarah Polley follows up her acclaimed hit *Away From Her* with a film that delves both humorously and dramatically into the intricacies of life, offering no easy answers and some surprising truths. Seth Rogan (*The 40 Year Old Virgin*, *Knocked Up*) is excellent as Williams' cookbook-author husband and Sarah Silverman provides a great supporting turn, but it is Williams' bravura performance that is a must-see. **RUNTIME** 116m; **DIRECTOR** Sarah Polley; **COUNTRY OF ORIGIN** Canada

TEDDY BEAR

Winner of the award for Best Director in the 2012 Sundance Film Festival's World Dramatic Category, Mads Matthiesen delivers a film that is both familiar and startlingly fresh. Hulkingly huge bodybuilder Dennis is terrified of women and lives at home with his controlling mother. As Dennis attempts to put together the first real relationship of his life, Matthiesen expertly weaves a terrific tale of intimate moments in the life of a giant with a pure heart. **RUNTIME** 92m; **DIRECTOR** Mads Matthiesen; **COUNTRY OF ORIGIN** Denmark; Danish with English Subtitles

TEDDY BEAR



WHY STOP NOW?



When a college piano prodigy tries to check his mother into rehab, he is taken hostage by her drug dealer and swept along on a wild adventure. An all-star cast led by Academy Award™ nominee Jesse Eisenberg (*The Social Network*), Academy Award™ winner Melissa Leo (*The Fighter*) and Tracy Morgan (*30 Rock*) are all in top form in this comic day-in-a-life tale of the ultimate dysfunctional family. **RUNTIME** 87m; **DIRECTORS** Phil Dorling, Ron Nyswaner; **COUNTRY OF ORIGIN** USA

DOCUMENTARY FILMS

JOURNEY TO PLANET X NJ PREMIERE*

By day Eric Swain and Troy Bernier are a couple of mild-mannered, middle-aged desk jockeys from Florida, but their wildest dreams come to life after hours when they get together to make fantastical sci-fi movies with the help of a green screen, amateur actors, and retro-futuristic computer graphics. As they embark on their most ambitious production yet, this hip and heartwarming documentary shows how boundless imagination can hilariously stretch the limits of DIY moviemaking. **RUNTIME** 78m; **DIRECTORS** Josh Khoury, Myles Kane; **COUNTRY OF ORIGIN** USA

JOURNEY TO PLANET X



KINGS PARK: STORIES FROM AN AMERICAN MENTAL INSTITUTION NJ PREMIERE*

On June 21, 1967, at the age of 17, Lucy Winer was committed to the female violent ward of Kings Park State Hospital following a series of failed suicide attempts. Over 30 years later, now an award winning documentary filmmaker, Lucy returns to Kings Park for the first time since her discharge. Her journey back sparks a decade-long effort to face her past and learn the story of the now abandoned institution that once held her captive. Her meetings with other former patients, their families, and the hospital staff reveal the painful legacy of our state hospital system and the crisis left by its demise. **RUNTIME** 108m; **DIRECTOR** Lucy Winer; **COUNTRY OF ORIGIN** USA

THE WORLD'S MOST FASHIONABLE PRISON

NORTHEAST PREMIERE
In the largest maximum security prison in the Philippines, run by gangs and home to over 12,000 inmates convicted for the most vicious crimes, Puey Quinones is on a mission. The 31-year-old fashion designer leads a double life away from the glamour of celebrity events, teaching inmates to create their own designs for a prison competition. One by one, a portrait of the inmates and the prison itself comes together through their stories and interaction, leading to a most unforgettable event. **RUNTIME** 67m; **DIRECTOR** Chun Kit Mak; **COUNTRY OF ORIGIN** Philippines

THIS AIN'T CALIFORNIA NJ PREMIERE*

A compelling, freewheeling story of a German Bones Brigade-type skating crew, the film follows its three heroes from their childhood in the seventies through their teenage rebellion in the eighties, ending in the last summer of their life in the German Democratic Republic in 1989, when their life changed forever. Capturing incredible footage of the time, the film offers a rarely-seen, fascinating look into an emerging skateboarding and punk subculture in the GDR. **RUNTIME** 90m; **DIRECTOR** Marten Persiel; **COUNTRY OF ORIGIN** Germany; German with English Subtitles

THIS AIN'T CALIFORNIA



NEW YORK SHOWCASE

Director Albert Uria follows eleven talented college seniors as they prepare to perform at a New York Showcase in hopes of landing representation. Whoever manages to get an agent will enter the professional world through the front door; the rest will have to keep on fighting as anonymous actors. The fortunes of all of them can be made on the spot and as the pressure mounts, the tight bond that they all share is tested to the fullest. **RUNTIME** 86m; **DIRECTOR** Albert Uria; **COUNTRY OF ORIGIN** USA

YOU LAUGH BUT IT'S TRUE NJ PREMIERE

A multiracial South African comedian creates material from his experiences during apartheid as he prepares for the biggest show of his life. Funny, gripping and personal, Trevor Noah leads the viewer into his life and into a world where he slides seamlessly between a young and brash rising star, and an inexperienced and vulnerable young man, all the while giving voice to a wide swath of underserved people. **Runtime** 84m; **Director** David Paul Meyer; **Country of Origin** South Africa, USA

NARRATIVES

A HANDFUL OF SEA (BIR AVUC DENIZ) NJ PREMIERE*

When successful businessman Mert moves back to Turkey, his life seems to have hit its stride. Wealthy, in love with a beautiful woman and again close to his family, all seems well...until Deniz enters his life. A wild, free-spirited artist, she captures Mert's attention and throws his world into turmoil. Gorgeous scenes on the Mediterranean and lush cinematography set the perfect tone for this romance between star-crossed lovers.

RUNTIME 113m; DIRECTOR Leyla Yilmaz; COUNTRY OF ORIGIN Turkey; Turkish with English subtitles

EMBEDDED WORLD PREMIERE*

Something is in the woods. A boy is missing, the townspeople are suspicious and the sheriff seems to know more than he's letting on. A reporter and cameraman on assignment for a story about missing livestock cover every twist and turn in this pitch-perfect scarefest of a film. Is it a grizzly out there...or something much, much worse?

RUNTIME 89m; DIRECTOR Micheal Bafaro; COUNTRY OF ORIGIN Canada



EMBEDDED

INTO THE WAKE



FAITH, LOVE AND WHISKEY NJ PREMIERE

Neli, a bright, young Bulgarian woman, engaged to a well-off American panics and runs back home. She reunites with her drifter friends and the wild life of her past. Among stray dogs and strip clubs, Neli falls in love with her passionate but alcoholic best friend. When her fiance arrives unexpectedly, Neli must make a choice between two opposing futures.

RUNTIME 75m; DIRECTOR Kristina Nikolova; COUNTRY OF ORIGIN Bulgaria; Bulgarian with English Subtitles

INTO THE WAKE NORTHEAST PREMIERE*

Into The Wake is a psychological thriller that follows a man lured from the city to the remote river banks of his youth by a cryptic phone call. Caught in a violent clan war that he ran from years ago, his life unravels rapidly behind him as he descends further into his past. Terrific performances abound in this tightly-woven gem.

RUNTIME 80m; DIRECTOR John Mossman; COUNTRY OF ORIGIN USA

SURFING MOVIES

COME HELL OR HIGH WATER

Come Hell or High Water travels to oceans around the world showcasing body surfing's characters, pioneers, innovators along with the simplicity and beauty of the sport. It's about taking a breath and kicking your feet in the big blue sea. The movie, shot mainly on 16 millimeter film spans the globe from Tahiti to Fiji, to Montana, Hawaii and California. The movie dives into the underground sport that most people know little about. Not only does *Come Hell or High Water* have incredible underwater imagery, it will wrench your heart as well as make you laugh! A one of kind film. *Come Hell or High Water* won Best Film and Best Cinematography at the New York Surf Film Festival. RUNTIME 42m; DIRECTOR Keith Malloy; COUNTRY OF ORIGIN USA

LOST AND FOUND

Lost and Found is the amazing story of the discovery of 30,000 long-lost negatives of old black-and-white photos of surfers at a flea market in Pasadena. After realizing what he had stumbled upon, Doug Walker begins a 3-year journey to find the origin of the photos. The journey takes him through the history of surf photographers, discovering what they meant to the sport and what the sport meant to them. Along the way, the film touches on the very soul of early surfing and the nature of memory. As Gerry Lopez says in the film, "You know the stories are the best part of it," and this film tells all of those stories beautifully.

RUNTIME 68m; DIRECTOR Doug Walker; COUNTRY OF ORIGIN USA

PAVILION



LIGHT OF MINE EAST COAST PREMIERE*

A photographer with a degenerative eye disease faces the prospect of permanent blindness and sets off on an impromptu road trip with his wife to Yellowstone in search of beautiful images to remember. A gorgeous, transcendently rendered movie that tells its story of love and loss through stunning images and perfectly nuanced scenes.

RUNTIME 77m; DIRECTOR Brett Eichenberger; COUNTRY OF ORIGIN USA

MY WEDDING AND OTHER SECRETS NJ PREMIERE*

The contemporary story of Chinese New Zealand-born over-achiever Emily Chu (Michelle Ang), raised to believe she can get anything she puts her mind to - until she meets James, a European New Zealander, and accidentally falls in love with him, risking her father's disownment. Fun, funny and featuring fantastic lead performances by Michelle Ang and Matt Whelan, it's a romantic comedy that hits all the right notes.

RUNTIME 85m; DIRECTOR Roseanne Liang; COUNTRY OF ORIGIN New Zealand



MY WEDDING AND OTHER SECRETS

PAVILION NJ PREMIERE*

Max leaves his lakeside town to live with his father on the fringe of suburban Arizona. Both fever dream and quiet trip, *PAVILION* creates a deep and ethereal world, showing us an innocent way of life coming apart at the seams, constructing an indelible image of the enigma of youth. Gorgeous cinematography and a keen visual style mark this feature, which had its world premiere at the 2012 SXSW film festival. Runtime 72m; Director Tim Sutton; COUNTRY OF ORIGIN USA

SEARCHING FOR SONNY NORTHEAST PREMIERE

When directionless twenty-something Elliot Knight (Jason Dohring) attends his 10-year reunion in Texas, a complex murder mystery leads his crew of high school pals on a mission to find their missing friend, Sonny. Elliot enlists the help of his fraternal twin Calvin (Nick Kocher), a pot-smoking barista, his timorous former classmate Gary Noble (Brian McElhaney), and his high school sweetheart Eden Mercer (Minka Kelly). Twisting, stylized and always entertaining, its comedic spin on a noir mystery deftly mixes genres to great effect.

RUNTIME 91m; DIRECTOR Andrew Disney; COUNTRY OF ORIGIN USA

*FILMMAKER EXPECTED TO ATTEND

SURFING MOVIES

MANUFACTURING STOKE

Visiting surfing legends and newcomers alike, filmmakers travel across the California coast while highlighting the surfing community's shift from petroleum based products to more organic and responsible components. No other sport is as intrinsically linked to nature, so why are a majority of the materials used environmentally toxic?

RUNTIME 80m; DIRECTOR Pierce Michael Kavanaugh; COUNTRY OF ORIGIN USA

COME HELL OR HIGH WATER



SHORT FILMS

1426 CHELSEA STREET

A man left homeless by the recession crosses paths with a lonely young girl and an unhappy woman and discovers an unlikely truth about human nature. Ryan Simpkins (Arcadia, A Single Man) and Jason Field (House M.D., CSI: NY) star in this socially relevant and moving story about finding home.

RUNTIME 29m; DIRECTOR Alanna Brown; COUNTRY OF ORIGIN USA

AILEMA

Amelia is a 7 year-old dyslexic who has learned to transform her shortcomings into creativity; when confronted with the unforgiving restrictions of the classroom she will use her imagination to overcome her limits.

RUNTIME 10m; DIRECTOR Cecilia Frugluele; COUNTRY OF ORIGIN UK

ALL NIGHT LONG

A brief but intense encounter between two lonely people changes both forever.

RUNTIME 13m; DIRECTOR Marc Cogan; COUNTRY OF ORIGIN Ireland

ANGELA WRIGHT

High school student Angela Wright makes a rash decision which quickly escalates into a situation that may derail her future.

RUNTIME 12m; DIRECTOR Mu Sun; COUNTRY OF ORIGIN USA

CROSSHAIRS

Beau and Jamie, two brothers from a rural West Australian town, are caught poaching a lamb from a neighbouring property. When Beau refuses to go quietly, his younger brother becomes a pawn in a violent showdown.

RUNTIME 12m; DIRECTOR Mike Hoath; COUNTRY OF ORIGIN Australia

DARK COMPANION

Howard (a puppet) has an existential crisis and nervous breakdown when he, and only he, can see his puppeteer... a featureless, humanoid shape that always looms over him, that he calls his "Dark Companion". His relationship with his wife and friends quickly break down when no one believes him, forcing Howard to take drastic measures.

RUNTIME 12m; DIRECTOR Darrell Hazelrig; COUNTRY OF ORIGIN USA

GROUNDING



DOUBLES WITH SLIGHT PEPPER*

Doubles with Slight Pepper is a dramatic film set in Trinidad during Christmas. It's a coming of age story centered around Dhani, a young street food vendor, who must decide if he will help save his estranged Father from dying.

RUNTIME 15m; DIRECTOR Ian Harnarine; COUNTRIES OF ORIGIN Canada, Trinidad & Tobago, USA

AILEMA



ELEVATOR*

Otto Smith, putting in some extra hours of work, gets trapped on an elevator car and the security camera records his story throughout his humorous ordeal.

RUNTIME 3m; DIRECTOR Thomas Holcombe II; COUNTRY OF ORIGIN USA

FAITH*

A modern film noir in which, during a stakeout, Mack & Eddie, longtime friends and partners on the NYPD, discover they share a secret that will destroy the bonds of trust and loyalty between them.

RUNTIME 12m; DIRECTOR Erik Pagan; COUNTRY OF ORIGIN USA

GRANDMA MUST GET DRY (NONNA SI DEVE ASCIUGARE)

The matriarch of an established winemaking family has died. Upon reading the testament her heirs find bad news: a piece of paper handwritten in 1943 in which the mother leaves everything to the village people. The contents of a Swiss deposit box could override the note, but the key could be anywhere on the estate.

RUNTIME 15m; DIRECTOR Alfredo Covelli; COUNTRY OF ORIGIN Italy

GROUNDING

One astronaut's journey through space and life ends on a hostile exosolar planet. Grounding is a metaphorical account of the experience, inviting unique interpretation and reflection by the viewer. Themes of aging, inheritance, paternal approval, cyclic trajectories, and behaviors passed on through generations are explored against an ethereal backdrop.

RUNTIME 9m; DIRECTORS Kevin Margo, Barrett Meeker; COUNTRY OF ORIGIN USA

*FILMMAKER EXPECTED TO ATTEND

LIGHTHOUSE INTERNATIONAL FILM FESTIVAL SCHEDULE

Friday

TIME	FOUNDATION OF THE ARTS & SCIENCES	ISLAND BAPTIST CHURCH	LONG BEACH ISLAND HISTORICAL MUSEUM	LONG BEACH ISLAND GRADE SCHOOL
6:00	6:00 PM For Ellen SO YONG KIM 93 MIN.			
7:00	● ● ● ● ●	7:00 PM You Laugh But It's True DAVID PAUL MEYEER 84 MIN. W/ This is Our House RAMTIN NIKZAD	7:30 PM Come Hell or High Water KEITH MALLOY 45 MIN.	8:00 PM Pavilion TIM SUTTON 72 MIN. W/ The Jesus Picture TONYA MERONK
8:00	8:30 PM The Ambassador MADS BRUGGER 93 MIN.	● ● ● ● ●	Lost and Found DOUG WALKER 65 MIN.	● ● ● ● ●
9:00	● ● ● ● ●	9:00 PM Light of Mine BRETT EICHENBERGER 77 MIN. W/ Doubles with Slight Pepper Ian Harnarine	9:45 PM Embedded MICHEAL BAFARO 89 MIN.	9:45 PM International Shorts Block CROSSHAIRS • WACKED..! • ALL NIGHT LONG • HATH NO MAN • THE YELLOW WALLPAPER 98 MIN.
10:00	10:30 PM Teddy Bear MADS MATTHIESEN 93 MIN.			
11:00				
MIDNIGHT				
1:00				

Saturday

TIME	FOUNDATION OF THE ARTS & SCIENCES	ISLAND BAPTIST CHURCH	LONG BEACH ISLAND HISTORICAL MUSEUM	LONG BEACH ISLAND GRADE SCHOOL
11:00	11:00 AM Chasing Ice JEFF ORLOWSKI 76 MIN.	11:30 AM Student Shorts Block	12:00 PM Daylight Savings DAVE BOYLE 73 MIN. w/ Grandma Must Get Dry (Nonna si deve asciugare) ALFREDO COVELLI	11:30 AM Saturday Shorts Block THE KOOK • ANGELA WRIGHT • SHERMAN • LIKE A GOOD NEIGHBOR • MANHATTAN MELODY • PARALLEL 90 MIN.
NOON	1:00 PM Now, Forager JASON CORTLUND 93 MIN.	1:30 PM New York Showcase ALBERT URIA 86 MIN.	2:00 PM This Ain't California MARTEN PERSIEL 90 MIN.	1:30 PM Faith, Love and Whiskey KRISTINA NIKOLOVA 75 MIN. w/ Hellion KAT CANDLER
1:00	3:15 PM Take this Waltz SARAH POLLEY 116 MIN.	4:00 PM Journey to Planet X JOSH KHOURY, MYLES KANE 78 MIN. w/ Grounded KEVIN MARGO & BARRETT MEEKER	4:30 PM Searching for Sonny ANDREW DISNEY 91 MIN. w/ Elevator THOMAS HOLCOMBE II w/ Our Lemonade Stand MARC GIACOMI	4:00 PM Why Stop Now? PHIL DORLING RON NYSWANER; 87 MIN.
2:00	5:30 PM Save the Date MICHAEL MOHAN 98 MIN.	6:30 PM Manufacturing Stroke PIERCE MICHAEL KAVANAGH 80 MIN. w/ Stacked EJ MCLEAVEY-FISHER & PATRICK CUMMINGS	7:00 PM Extracted NIR PANIRY 88 MIN. w/ The Dark Companion DARREL C. HAZELRIG	6:30 PM My Wedding and Other Secrets ROSEANNE LIANG 85 MIN. w/ The Man at the Counter BRIAN MCALLISTER
3:00	8:00 PM Little Birds ELGIN JAMES 96 MIN.		9:00 PM Into the Wake JOHN MOSSMAN 78 MIN. w/ Faith ERIK PAGAN	9:00 PM Into the Wake JOHN MOSSMAN 78 MIN. w/ Faith ERIK PAGAN
4:00				
5:00				
6:00				
7:00				
8:00				
9:00				
10:00				
11:00				
MIDNIGHT				

Sunday

TIME	FOUNDATION OF THE ARTS & SCIENCES	LONG BEACH ISLAND HISTORICAL MUSEUM	LONG BEACH ISLAND GRADE SCHOOL
11:00		11:30 AM The World's Most Fashionable Prison CHUN KIT MAK 67 MIN. w/ The Man Who Knew How to Fly ROBI MICHAEL	11:30 AM Sunday Shorts Block I'M COMING OVER • AILEMA • 1426 CHELSEA STREET • LOCAL TOURISTS 84 MIN.
NOON		1:30 PM A Handful of Sea LEYLA YILMAZ 113 MIN.	1:30 PM Kings Park: Stories from an American Mental Institution LUCY WINER 108 MIN.
1:00			
2:00	2:00 PM Cape Spin ROBBIE GEMMEL 90 MIN.		
3:00	4:30 PM Sleepwalk With Me MIKE BIRBIGLIA 90 MIN.		
4:00			
5:00			
6:00			
7:00			

Supported in part by a grant from New Jersey Department of State, Division of Travel and Tourism • visitnj.org

New Jersey
visitnj.org

OCEAN COUNTY
CHAMBER OF COMMERCE

FUNDED IN PART BY A GRANT FROM THE BOARD OF CHOSEN FREEHOLDERS

For Free Vacation Guide
CALL 800 - 365 - 6933
WWW.OCEANCOUNTYTOURISM.COM

This program is made possible in part by a grant administered by the Ocean County Cultural and Heritage Commission, in conjunction with the New Jersey State Council on the Arts/Department of State, a partner agency of the National Endowments for the Arts.

NEW JERSEY STATE COUNCIL ON THE ARTS

WELCOME TO LONG BEACH ISLAND

LBI FILM FESTIVAL

1. LIGHTHOUSE VISITOR CENTER BARNEGAT LIGHTHOUSE STATE PARK Barneгат, NJ
2. LONG BEACH ISLAND FOUNDATION OF THE ARTS & SCIENCES 120 N Long Beach Blvd. Loveladies, NJ
3. LONG BEACH ISLAND LIBRARY 217 South Central Avenue Surf City, NJ
4. FESTIVAL HEADQUARTERS: SOUTHERN OCEAN COUNTY CHAMBER OF COMMERCE 265 W. 9th Street Ship Bottom, NJ
5. SHIP BOTTOM (LBI) GRADE SCHOOL 201 20th Street Ship Bottom, NJ
6. JOE POPS 2002 Long Beach Blvd. Ship Bottom, NJ
7. BLUE WATER CAFE 113th & the Blvd Haven Beach, NJ
8. LBI HISTORICAL MUSEUM 129 Engleside Ave Beach Haven, NJ
9. THE GATEWAY 227 West 8th Street, Ship Bottom, NJ
10. ISLAND BAPTIST CHURCH 215 3rd St, Beach Haven, NJ
11. THE DUTCHMAN'S BRAUHAUS 2500 East Bay Ave, Cedar Bonnet Island, NJ
12. MISS BARNEGAT LIGHT 1801 Bayview Avenue Barneгат Light, NJ Next to Viking Village

HATH NO MAN

Hath No Man tells of the heart-warming tale of the bond between an Australian war cameraman and an Australian soldier forged in the battle fields of WWII.

RUNTIME 15m; DIRECTOR Linus Kohl; COUNTRY OF ORIGIN Australia

HELLION

All hell breaks loose when little Petey is left with his two hell-raising brothers. But things go from bad to really, really bad when dad gets home.

RUNTIME 6m; DIRECTOR Kat Candler; COUNTRY OF ORIGIN USA

I'M COMING OVER*

I'm Coming Over reveals a day in the life of neo-luddite Matt Downing (Josh Hamilton), owner and proprietor of "I'm Coming Over", specializing in holistic happiness. When traditional therapy has failed, Matt Downing picks up the pieces with common sense, good old fashioned hard work, and a strict avoidance of the modern world. A charming, offbeat comedy co-starring Lauren Ambrose, Mike Birbiglia and Hamish Linklater.

RUNTIME 25m; DIRECTOR Sam Handel; COUNTRY OF ORIGIN USA;

THE JESUS PICTURE*

Based on actual events, *The Jesus Picture* is a dark morality tale set in the 1950s of a woman who harbors a deep, gnawing secret and the shocking outcome of her decisions.

RUNTIME 22m; Director Tonya Meronk; COUNTRY OF ORIGIN USA

THE KOOK*

When Fa, a gentle, unassuming member of an eccentric religious sect in the Catskill Mountains, discovers that their alien leader is crossing signals with Malcolm, a man who lives nearby, she must set out alone into the 'real world' to find him and get to the bottom of the situation.

RUNTIME 18m; DIRECTORS Nat Livingston Johnson, Gregory Mitnick; COUNTRY OF ORIGIN USA

OUR LEMONADE STAND



LIKE A GOOD NEIGHBOR*

Tom is a good neighbor. He'll get your mail, feed your pets, or investigate your blood curdling screams. Tom brings his new neighbor a housewarming cupcake to say "Welcome to the building. I think you'll like it here. Did someone in your apartment scream help?"

RUNTIME 8m; DIRECTOR David Lassiter; COUNTRY OF ORIGIN USA

SHORT FILMS CONT'D

I'M COMING OVER



LOCAL TOURISTS*

A beach comedy about despair.

RUNTIME 18m; DIRECTOR Doug Lenox; COUNTRY OF ORIGIN USA

THE MAN AT THE COUNTER*

The Man at the Counter tells the story of a young boy who spends the summer working at a small-town coffee shop, who takes in the actions of an elderly customer all summer and is forced to deal with some of life's most basic questions.

RUNTIME 8m; DIRECTOR Brian McAllister; COUNTRY OF ORIGIN USA

THE MAN WHO KNEW HOW TO FLY

Mr. Tomasek has just discovered the human ability to fly. Now he fears the repercussions.

RUNTIME 24m; DIRECTOR Robi Michael; COUNTRIES OF ORIGIN USA, Israel

MANHATTAN MELODY

Manhattan Melody is the thrilling and bittersweet musical story of Holly Knolls: a lonely young manicurist who finds unexpected adventure with a charismatic thief. RUNTIME 19m; DIRECTOR Sasha Gordon; COUNTRY OF ORIGIN USA

OUR LEMONADE STAND*

Geoff and Allyson's only obstacle to selling street-side lemonade? Themselves.

RUNTIME 6m; DIRECTOR Marc Giacomini; COUNTRY OF ORIGIN USA

THIS IS OUR HOUSE

In the aftermath of the Iraq war, artist Abdul Ameer Alwan experiences isolation and anonymity after seeking asylum in the United States and worries about his daughter's disconnect from the place of her birth.

RUNTIME 11m; DIRECTOR Ramtin Nikzad; COUNTRY OF ORIGIN USA

*FILMMAKER EXPECTED TO ATTEND

SHORT FILMS

CONT'D

PARALLEL

Searching through parallel worlds for the love he once had, Tim Caviot discovers that everything happens for a reason, even in the most extreme circumstances.

RUNTIME 18m; DIRECTOR Andrew R. Jones; COUNTRY OF ORIGIN Switzerland

SANJIBAN

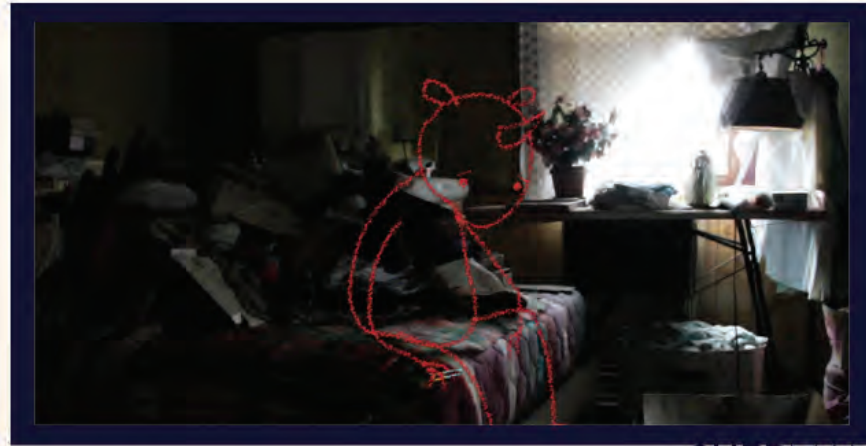
Sanjiban has just passed away and his body is about to return to the earth, but he lives on in his twin brother and his eccentric, artistic films.

RUNTIME 7m; DIRECTOR Ben Pender-Cudlip; COUNTRY OF ORIGIN USA

SHERMAN*

Sherman struggles with the reality of being an imaginary friend when his creator grows up and leaves.

RUNTIME 4m; DIRECTOR Kate Tsang; COUNTRY OF ORIGIN USA



SHERMAN

STACKED

When the Quiksilver Pro surf competition makes an unprecedented stop in the small town of Long Beach, New York, 20 year-old local surfer Balaram Stack must represent his hometown by competing against Kelly Slater and the world's best surfers in the biggest contest in the history of professional surfing.

RUNTIME 15m; DIRECTORS EJ McLeavey-Fisher, Patrick Cummings; COUNTRY OF ORIGIN USA

WACKED..! (DURA..!)

Wacked..! tells the story of Michael and his friends Mani and Dani. All three of them are patients in a psychiatric institution with the same goal: they want out! The lively interplay between the characters sets the scene and provides insight into the manic-depressive protagonist's inner world. A serious topic, portrayed in an entertaining and direct manner.

RUNTIME 29m; DIRECTOR Rolf Lang, Quinn Reimann; COUNTRY OF ORIGIN Switzerland

THE YELLOW WALLPAPER

The Yellow Wallpaper is an unusual Gothic horror adapted from the short story of the same name, written in 1892, about a woman's growing obsession with the wallpaper in her country bedroom and the secrets that it may conceal. RUNTIME 29m; DIRECTOR Stuart Hackshaw; COUNTRY OF ORIGIN UK

STUDENT FILMS

GREEN ENERGY

Andy DiAngellis
Steve Krawiec
Paul Szczypinski

DR. JECKYL & MRS. HYDE

Liz Morris

MOSAIC

Danielle Green

OUT OF LEAD

Garrett Schedliga

2D4U

Garrett Schedliga

A.B.S

Brigid Fleming

ALONE TOGETHER

Ben Kadie

LETTING GO

Cameron MacKenzie

COOL!

Donavan Kennedy
Danny Shubert
Steven Sung
John Scannapieco

SAVING THE WORLD BEFORE TOMORROW

Samantha Brandt

FLAVOR OF THE DAY

Greg Contaldi

HERMIT CRAB DOCUMENTARY

Jon Nguyen

ANABELLE'S TRAGEDY

John Pasquarello

Davis Polk

is proud to support the
**Lighthouse International
Film Festival.**

Davis Polk

New York
Menlo Park
Washington DC
London
Paris

Madrid
Tokyo
Beijing
Hong Kong

SPONSORS & PARTNERS

VENUES



TECHNICAL

WITHOUTABOX

SUPPORTERS



THANK YOU &

PLEASE CONSIDER JOINING the LIGHTHOUSE FILM SOCIETY

WWW.LIGHTHOUSEFILMFESTIVAL.ORG

DONORS

STUDIO HEAD -- \$10,000 AND ABOVE
DAVIS POLK
ORANGEYOUGLAD
THE PRINCE FAMILY

EXECUTIVE PRODUCER -- \$5,000 TO \$9,999
JANOVER LLC
SEA BREEZE REALTY

PRODUCER -- \$2,500-\$4,999
CAVATAPPO GRILL & WINE BARS
ECHOES OF LBI
LBI TV CHANNEL 22
MARGARET WOLFF
THE SCONSET GROUP

DIRECTOR -- \$1,000 TO \$2,499
A LITTLE BITE OF ITALY
COASTAL SIGN & DESIGN
FRESH CUT FLOWERS INC.
GRUBMAN, INDURSKY & SHIRE, LLP
MARJORIE & JEFFREY HONICKMAN
KALTENBACH PRODUCTION
LBI DREAMMAKERS
LBI HISTORICAL ASSOCIATION
LBIF OF THE ARTS & SCIENCES
PEG & RICK KOPPE
ROCK SOLID PRODUCTIONS
S & S SPORTS
SOUTHERN OCEAN COUNTY CHAMBER OF COMMERCE
SURF UNLIMITED
THE DUTCHMAN'S BRAUHAUS
THE GABLES

WBNJ 91.9 FM
WOLF JOFEE

ACTOR -- \$500-\$999
A. RICHARD AITKEN, JR.
ARLENE AND FRED SCHRAGGER
BAYBERRY INN
BLUE WATER CAFE
COASTAL ROOFING
CORAL SEAS MOTEL
DAMIAN & CHERIE SCHAIBLE
DRIFTING SANDS OCEANFRONT MOTEL
HOGLAND, LONGO, MORAN, DUNST & DOUKAS, LLP
ISLAND BAPTIST CHURCH
JOE POP'S BAR AND RESTAURANT
LONG BEACH ISLAND BUSINESS ALLIANCE
OSKAR HUBER
SANDY PAWS DOG SITTING, LLC
SEA SPRAY MOTEL
SKIPPER DIPPER
SURF CITY HOTEL
SURFLIGHT THEATER
THE ENGLSIDE INN & RESTAURANT
THE GATEWAY
THE SANDPAPER
THINGS A DRIFT

FILM BUFF -- \$250-\$499
A & L GRAPHICS
CANDY TIME & OOH LA-LA
SAMUEL & CHERYL DIMON
CENTURY 21 MARY ALLEN REALTY
CHRISTINE & KEVIN ROONEY

ISLAND SURF & SAIL
LAURA REGNIER
DR. ARTHUR LIEBESKIND
MINERVA'S BY THE SEA
MY LBI LIFE
PERLMUTTER FAMILY SHOPRITES

FAN -- \$100-\$249
AQUA MARINE GREEN
ARLENE ADLER
BAY AVENUE PLANT COMPANY
BAY VILLAGE'S INDIAN SUMMER
CATCH A RISING STAR
DONNA BRADLEY - ARBONNE INTERNATIONAL CONSULTANT
ISLAND ARTS
JAMES KATCHADURIAN
JULIA KIRCHHAUSEN
LISA KULL
MARGUERITE & LARRY SMITH
MARJORIE SPITZ
MARY DEMICHELE
NORTH END TRILOGY
PAT MORGAN
PEARL STREET MARKET
PEG & KEN KLEIN
LYNN POSS
RED SAILS SALON
SANDI & ROGER SALERNO
SURF CITY RITA'S WATER ICE
DEBBIE & ANTHONY TADDUNI
THE HAYMARKET
WILDFLOWERS BY THE LIGHTHOUSE



Maggie M. O'Neill
Realtor/Associate

2909 Long Beach Blvd
Ship Bottom, NJ 08008
609-494-0700

moneill@maryallen.com

Century 21 Mary Allen Realty

www.njbeachhouse.net



The perfect place to stay at the beach

Coral Street and Oceanfront | 609-492-1141
Beach Haven, NJ 08008 | coralseasmotel@gmail.com

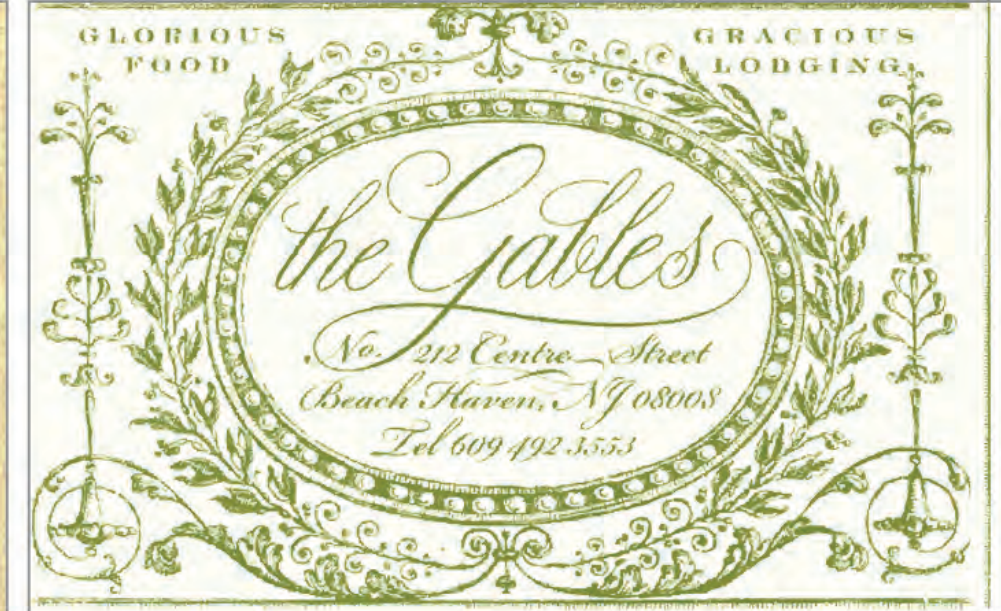
A LITTLE BITE of Italy

EUROPEAN MARKET
& RESTAURANT

GOURMET ITALIAN DELI, PIZZA,
EUROPEAN BAKERY AND RESTAURANT
WWW.ALITTLEBITEOFITALY.COM

609-361-0506

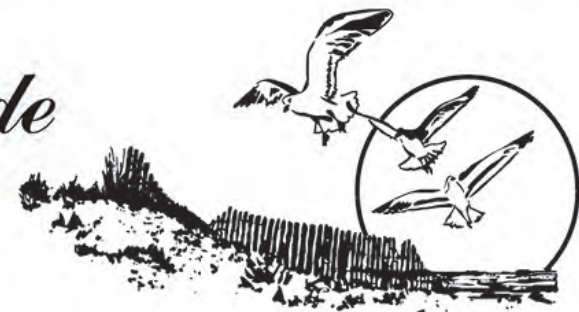
1419 LONG BEACH BLVD., SURF CITY, NJ 08008



WWW.ENGLESIDE.COM

(609) 492-1251

Engleside Inn



30 Engleside Avenue
Beach Haven, NJ 08008



Drifting Sands Oceanfront Motel

119 E. 9th St., Ship Bottom • 609-494-1123
www.dsbl.com

Custom Designs

COASTAL SIGN AND DESIGN

356 N. Main St. • West Creek, NJ
609-294-3447

Signs • Vehicle Lettering & Wraps
Graphic Design • Banners • T-Shirts
Stickers • Magnets • Business Cards
Channel Letters • Carved Signs
Monuments • LED Message Centers

Quality Signs



SURF CITY HOTEL

8th Street and Long Beach Blvd.
Surf City, NJ 08008

(609) 494-7281
www.surfcityhotel.com

Things A Drift

Shells, coral, jewelry, hermit crabs, driftwood, and local history books by local authors. Nautical design consultation, kitchens, family rooms, and mantels are our specialty. We have a large selection of nautical art, shells, mermaids, natural driftwood, and maritime artifacts from around the world! Also, don't miss our annual Sea Glass Festival **October 1 and 2**.
Things A Drift, 406 Long Beach Boulevard, Ship Bottom, NJ 609-361-1668

KALTENBACH PRODUCTIONS

An Avenue to the Imagination...

Minerva's by the sea

609-494-1000
www.MinervasBandB.com

Great B & B Hospitality By The Sea
13 West Seventh Street
Barnegat Light, NJ 08006

S&S SPORTS

Custom Screen Printing and Embroidery
Customized Sportswear
Advertising Specialties
Bob Smith • 609-290-3367
P.O. Box 1086, Beach Haven, NJ 08008

Surf and Beach Gear, Ugg,
Sunglasses, Footwear, Men's and Women's
Clothing, Wetsuits and Accessories

1820 Long Beach Blvd.
Ship Bottom, NJ 08008
Phone # 609-494-3555



Joe Pop's

Shore Bar & Restaurant
Long Beach Island, NJ

It's a Shore Thing
2002 Long Beach Blvd
Ship Bottom, NJ 08008
(609) 494-0558

Fresh Cut Flowers Inc

Flowers for all your needs

ROBERT MCKINNON

444 WEST 43RD STREET * NEW YORK, N.Y. 10036
TEL 646 473 0274 * FAX 646 473 1532
www.freshcut444.com freshcut444@att.net



YOUR HELPING HAND TO THE LBI SAND

**Call us today
For all your
Real Estate needs**

**Sales
&
Summer Rentals**

SERVING ALL OF LBI !!!

**2017 Long Beach Blvd Surf City
609.494.7778
www.SeaBreezeRealtyonLBI.com**

JANOVER LLC
CERTIFIED PUBLIC ACCOUNTANTS
TRUSTED ADVISORS

Janover LLC has made its reputation by being more than just Certified Public Accountants; we are your Trusted Advisors. When it comes to your money and your assets, the foundation elements that preserve your family's way of life, we want to be the people you can depend on. The people you come to first for advice and to provide the solutions that you need. That's why since 1938, thousands of clients have come to depend on the Janover family of companies to give them a safe haven through the rapidly changing business and taxation landscape.

100 Quentin Roosevelt Blvd - Suite 516
Garden City, NY 11530
Ph: 516.542.6300 Fax: 516.542.9021

805 Third Avenue - 10th Floor
New York, NY 10022
Ph: 212.792.6300 Fax: 212.792.6350

JANOVER LLC
A LIMITED LIABILITY CORPORATION



**LBI HISTORICAL
ASSOCIATION**

info@lbimuseum.org

Engleside & Beach
Avenues
PO Box 1222
Beach Haven, NJ 08008
609.492.0700
www.lbimuseum.org



265 West Ninth Street, Ship Bottom, NJ
609-494-7211

The Official Website of the Long Beach Island Region of the Jersey Shore.
VisitLBIRegion.com



**LONG BEACH ISLAND FOUNDATION
OF THE ARTS & SCIENCES**

120 Long Beach Blvd
Loveladies, NJ 08008
(609) 494-1241
www.lbifoundation.org

**ON TV
ONLINE
ON SMARTPHONES**



LBI TV airs 10 times every day all summer long on LBI cable channel 22, and all year long online. Check out this video series featuring the people, places, activities, and events that make the LBI lifestyle so special. For TV air times, or to watch anytime online, go to LBITV.com. For ad info, call 609-294-2111.

2012
Excellence in Tourism
Award Winner!



JOIN TODAY

MEMBERSHIP INCLUDES:

LIGHTHOUSE FILM SOCIETY MEMBERSHIP CARD • ADVANCE ACCESS TO LIGHTHOUSE FILM FESTIVAL TICKETS AND PASSES • ADVANCED DELIVERY OF OFFICIAL PROGRAM GUIDE • COMPLIMENTARY FESTIVAL POSTER • ADVANCE NOTICE REGARDING FILM SOCIETY SCREENINGS • COMPLIMENTARY TICKET (OR TICKETS) TO FILM SOCIETY SCREENINGS • Q&A WITH DIRECTORS

WWW.LIGHTHOUSEFILMFESTIVAL.ORG

ROCKSOLID PRODUCTIONS

RADIO/TV JINGLES FILM SCORING
 PRIVATE LESSONS VIDEO GAME MUSIC
 ARRANGEMENTS RECORDING
 COMPOSITIONS PRODUCTION
 LIVE MUSIC FOR WEDDINGS AND EVENTS
 Contact Halley
 ROCKSOLID321@GMAIL.COM 609-713-1210
 WWW.FACEBOOK.COM/ROCKSOLIDPRODUCTIONSLLC



Sea Spray Motel

ROOMS • EFFICIENCIES • COLOR TV • HEATED POOL

2600 South Bay Avenue • Beach Haven Inlet, NJ 08008
www.SeaSPrayLBI.com

FOR RESERVATIONS, PLEASE CALL OR EMAIL:
book@SeaSprayLBI.com • 609-492-4944



A. Richard Aitken, Jr.
 BUILDER • CONTRACTOR LLC

FOR ALL YOUR SHORE HOME NEEDS!
 CUSTOM HOMES & ADDITIONS

Authorized Parts & Service
 Regional Service Provider
 James Hardie Siding
 Regional Installer

302 Long Beach Blvd.
 Ship Bottom, NJ 08008
 609-494-6020
 www.araiken.com

A&L DESIGN

BRANDING
 TRADE SHOWS
 BILLBOARDS
 STATIONARY
 PHOTOGRAPHY
 VIDEOGRAPHY
 PRINT MEDIA

ADRIAN@AANDLGRAPHIX.COM
 201-401-0809 f Facebook

ARLENE SCHRAGGER
 ads Public Relations & Marketing
 and
FRED SCHRAGGER
 Attorney-at-Law

...wish...

THE LIGHTHOUSE INTERNATIONAL FILM FESTIVAL
 enormous growth & continued success!

The
Dutchman's Brauhaus
 Since 1952
 The Bavarian Tavern
 The Quelle

609.494.6910



2500 East Bay Avenue www.thedutchmans.com
 Cedar Bonnet Island, NJ Like Us on Facebook.com

The
Gateway
 RESTAURANT & LOUNGE

Dining Specials

THURSDAY PRIME BEE TENDER \$15.99	FRIDAY'S-SUNDAY CHOWDER NIGHTS \$14.99	SATURDAY APPETIZER NIGHT \$14.99
--	---	---

NFL Sunday Ticket
 Monday Night Football
 Sports & Outlets

Weird Al Karaoke
 "THE BEST KARAOKE" Friday & Saturday 7pm-12am

COASTAL ROOFING
 FIBERGLASS ROOFS & DECKS
 Serving Long Beach Island Since 1968
 www.coastalroofinglbi.com
 609-494-0944

Fully Insured
 Free Estimates
 NJ REG#13VH02059900

Island Baptist Church

Your Church at the Shore!

2012 Summer Schedule

Sunday Celebration
 Sunday at 10:00am
 Adults and Children

Family Movie Night
 Monday at 7:15pm

Women's REFRESH
 Tuesday at 7:00pm

Family Fun Night
 Thursday at 6:30pm

215 3rd Street, Beach Haven, NJ
 www.islandbaptist.net

ISLAND SURF & SAIL
 BRANT BEACH, NJ



SAVE THE DATE

LBIfest

Saturday, June 9th

FREE ADMISSION 11 AM - 6 PM
 68th Street & Long Beach Boulevard, Brant Beach
 To Benefit The Southern Ocean Medical Center Foundation (Formerly S.O.C.H.)

FAMILY FUN AT THE BAY FOR ALL AGES

LBIfest.com

oskar huber
 FURNITURE & DESIGN

8th & The Blvd. Also in
 Ship Bottom, NJ Southampton, PA

609-494-8127 215-355-4800
 www.oskarhuber.com

Sandy Paws Dog Sitting, LLC

Specializing in TLC by the Sea
 for your small loved ones

Hope Gardiner
 sandypaws1134@gmail.com
 www.sandypawsdogsitting.com
 609-494-5554
 Brant Beach, NJ

Their time to play while you're away

LBI Dream Makers

PERSONALIZED CONCIERGE SERVICE
 Linens, Groceries, Beach Equipment and more...



CONTACT CONNIE
 908-731-1174
 802 CENTRAL AVENUE, BARNEGAT LIGHT, NJ
 www.LBIDreamMakers.com

WBNJ

91.9 FM

MAY 26 - JUNE 6
 A TRIBUTE
 to
SIR ANDREW LLOYD WEBBER
 ALL I ASK
 of
 YOU

www.surflight.org
 609-492-9477

SURFLIGHT THEATRE

BUY TICKETS NOW!





HOW TO
PLAY

